

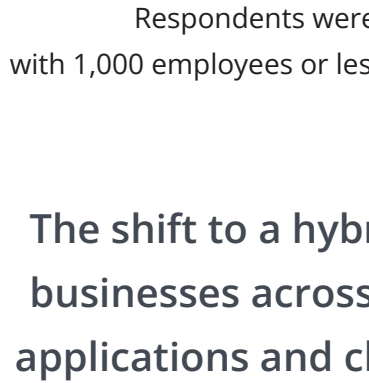


Tech Trends & Insights:

The State of BCDR



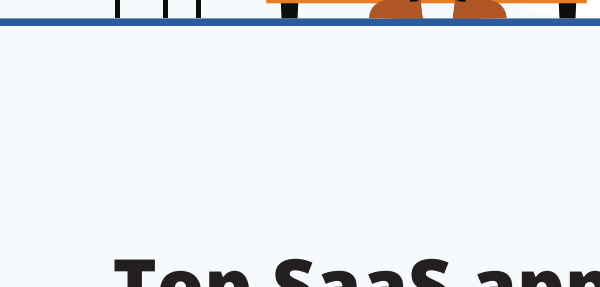
Summary of Top Findings



Surveyed over **650 IT professionals** worldwide.

Respondents were divided into two groups: small and midsize businesses (SMBs) with 1,000 employees or less, and mid-market enterprises (MMEs) with more than 1,000 employees.

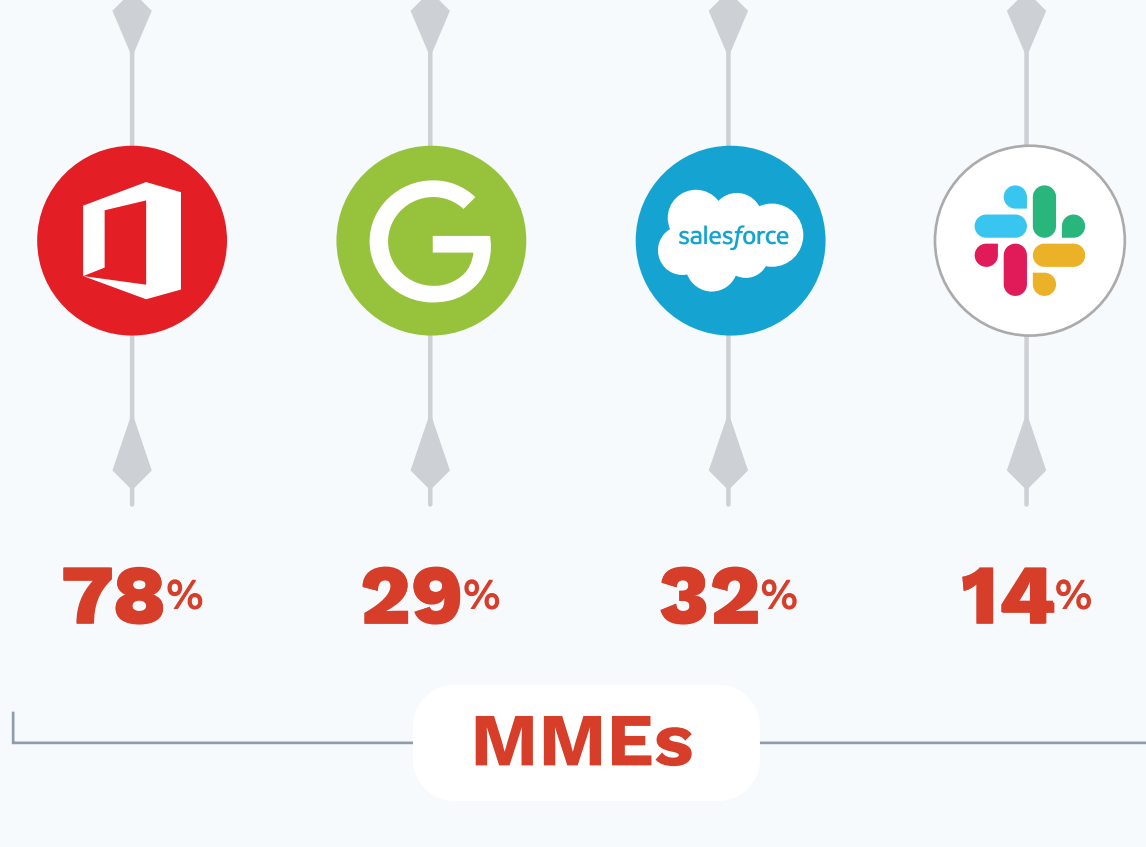
The shift to a hybrid work model presented unique challenges for businesses across the globe. It introduced new workloads — SaaS applications and cloud-based. In addition to traditional data center workloads, SaaS applications have also become vital to an organization's day-to-day operations. This significantly increases potential attack surfaces and IT complexity, in turn threatening business continuity.



How are companies adapting to support the change to a hybrid workforce and, most importantly, keeping their businesses afloat amid surging cyberattacks?

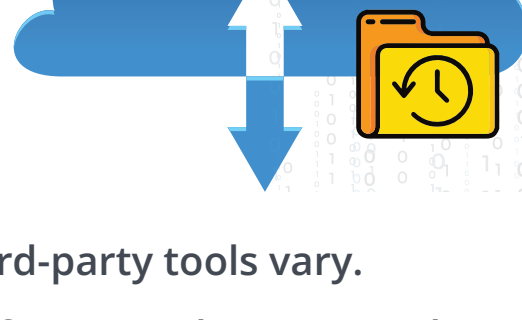


Top SaaS applications that drive modern businesses*

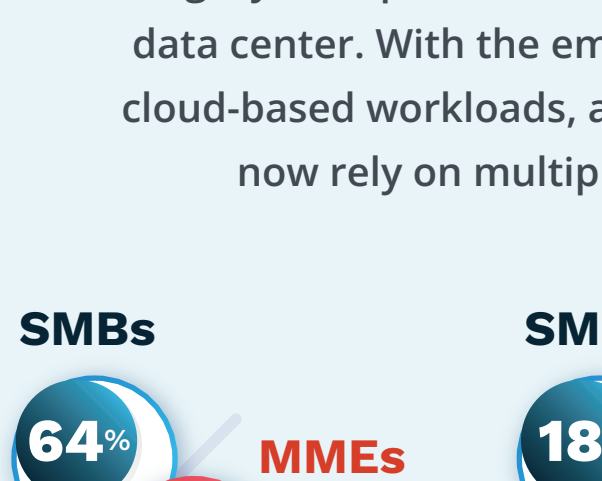
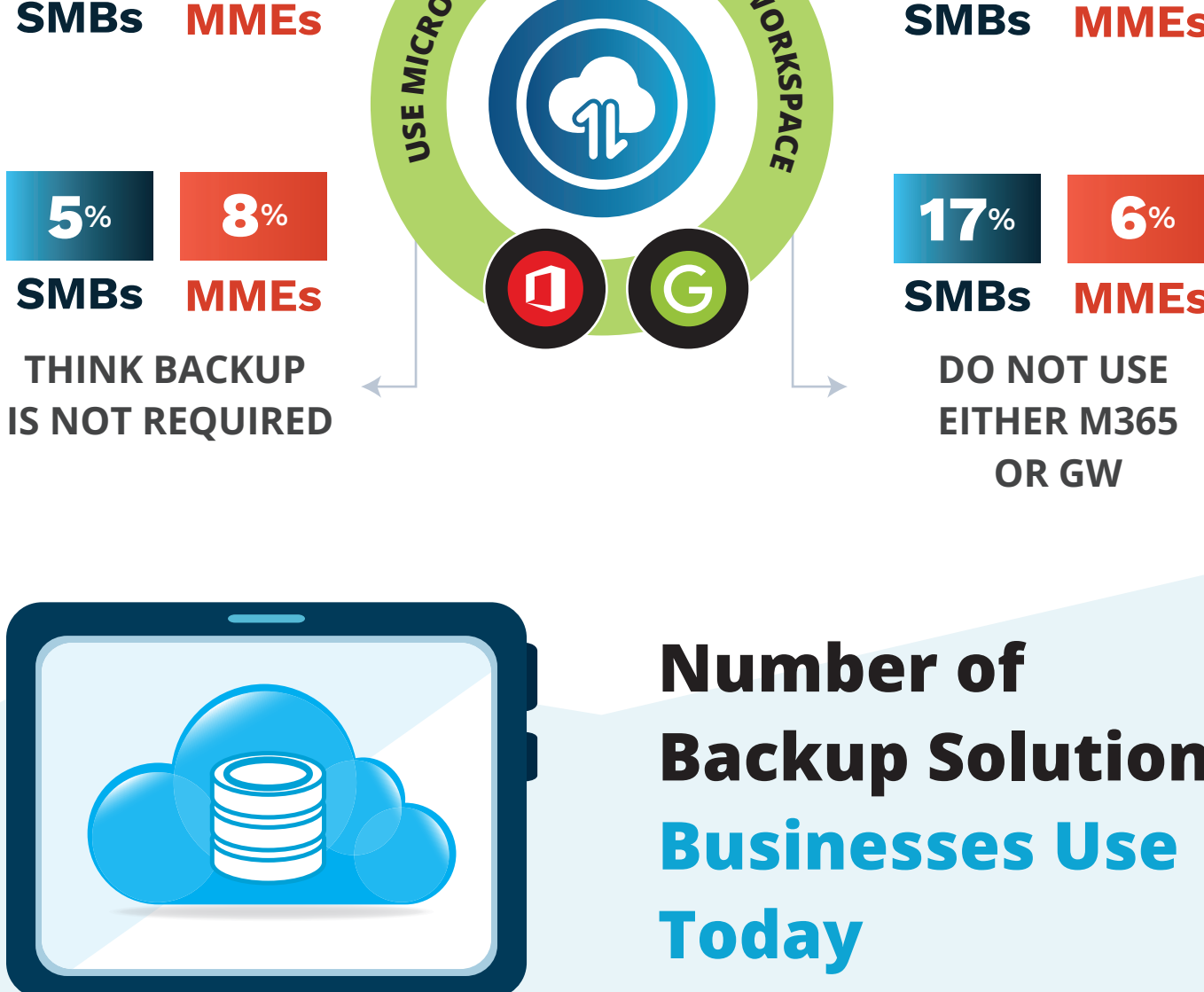


*Respondents were asked to select all applications in use at their organization. Responses will not add up to 100%.

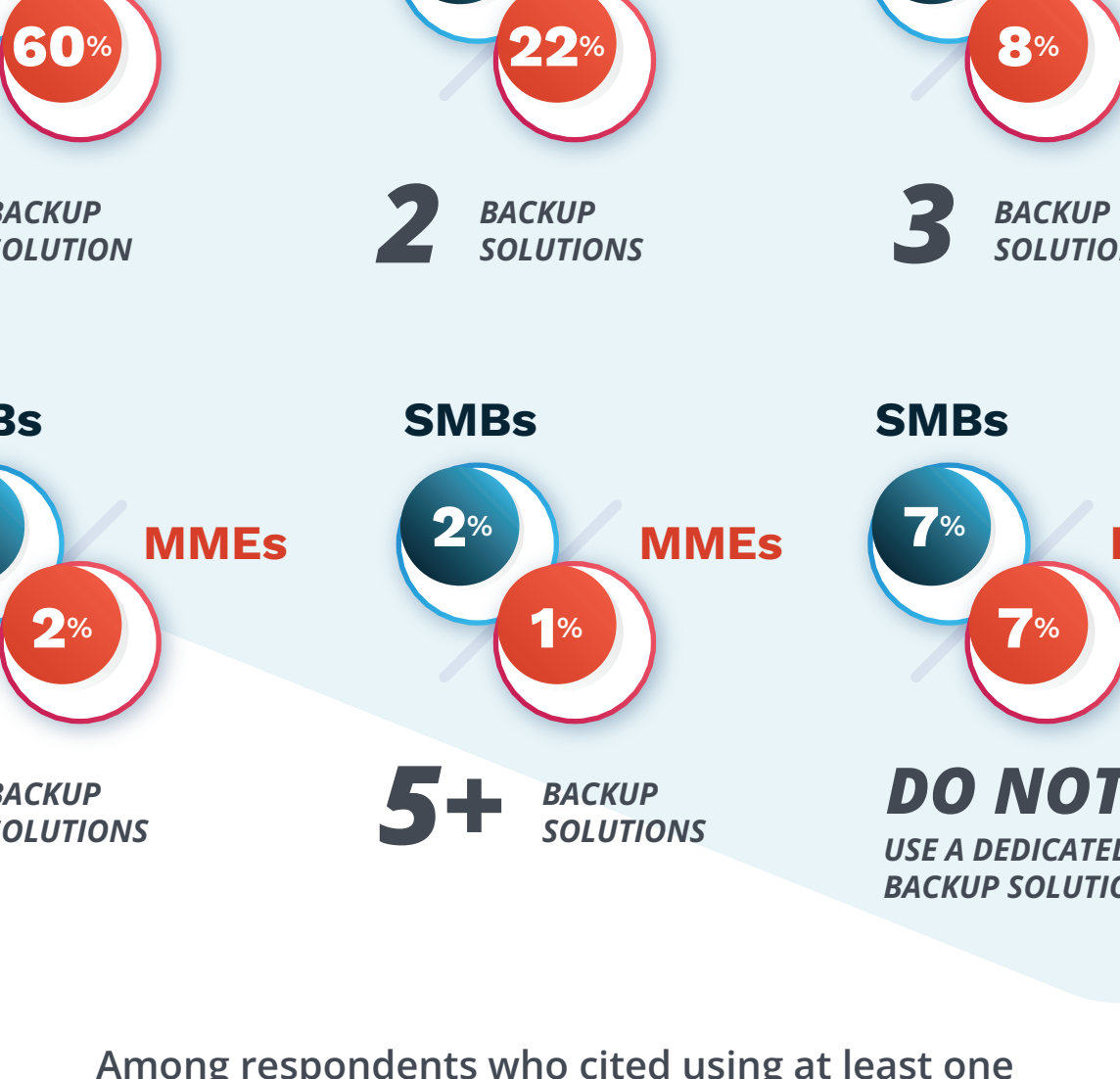
Backing Up SaaS Data



Sentiments among businesses regarding the necessity to back up SaaS data via third-party tools vary. However, sentiments regarding the use of SaaS applications and backing up the data are similar among SMB and MME respondents:



Number of Backup Solutions Businesses Use Today

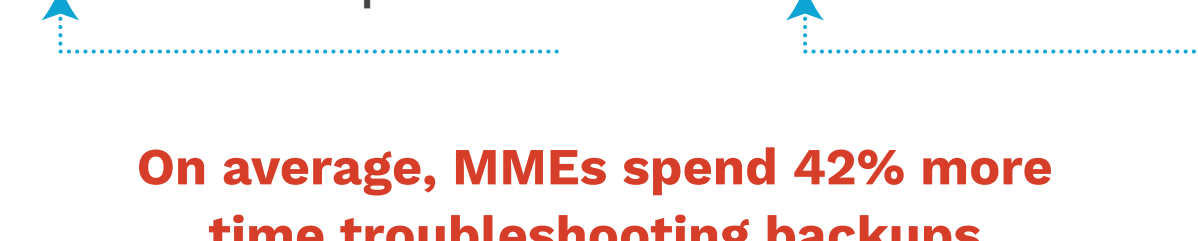


Among respondents who cited using at least one backup solution, the average number of solutions in use per organization is **1.49 solutions per SMB** and **2.40 solutions per MME**.



Challenges of Implementing New Technologies

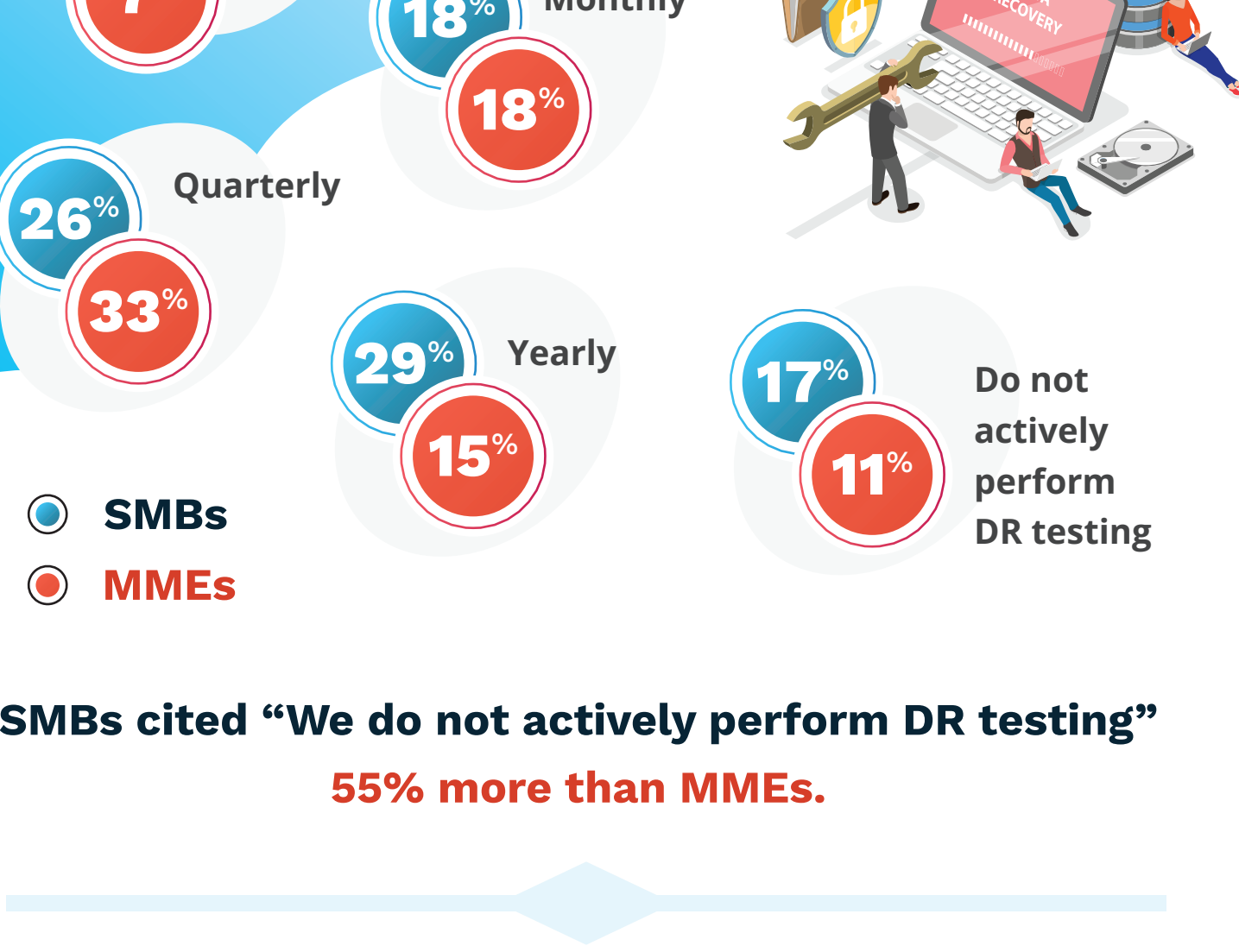
New technologies introduced to address burgeoning needs lead to operational complexity and require additional efforts to monitor, manage and maintain them.



On average, MMEs spend 42% more time troubleshooting backups than their SMB counterparts.

Frequency of DR Testing

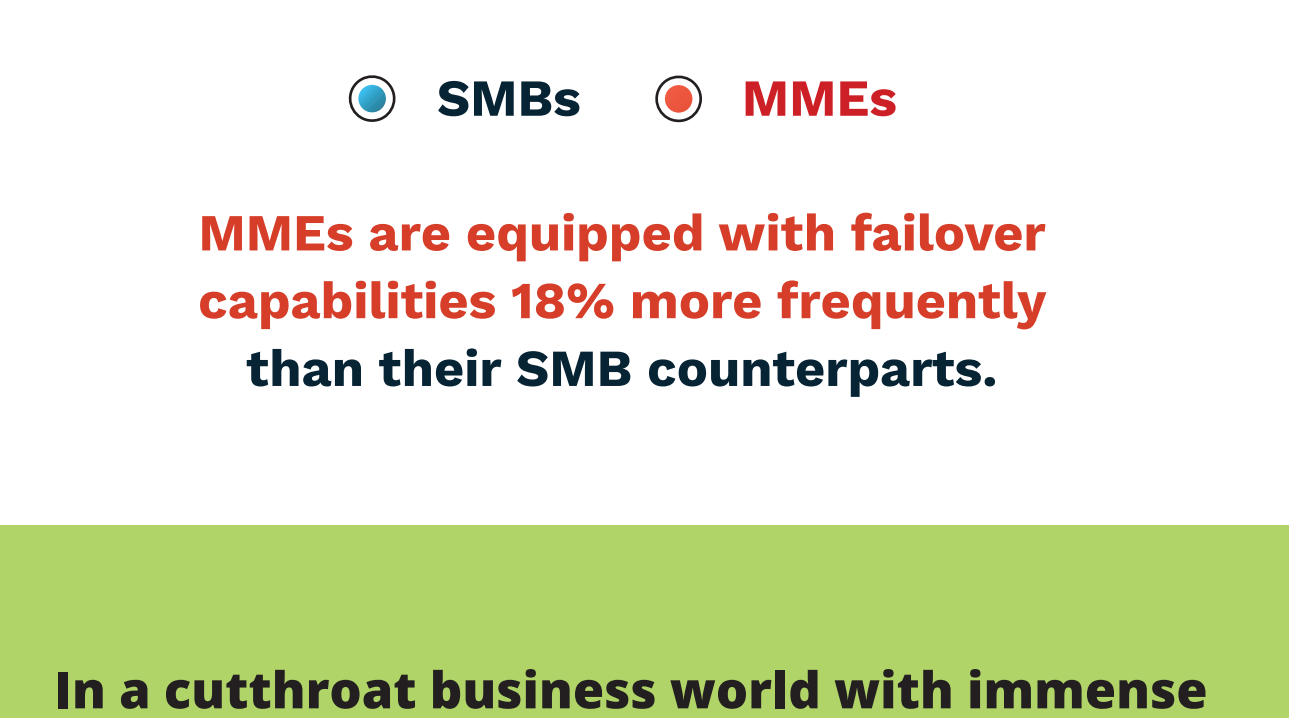
Disaster recovery (DR) testing is critical to ensuring a successful recovery. SMBs and MMEs reported similar frequencies with regard to testing.



SMBs cited "We do not actively perform DR testing" 55% more than MMEs.

Failover Capabilities

Failover to a secondary site allows organizations to maintain business continuity in the event of an outage or major disaster that impacts their production site.



MMEs are equipped with failover capabilities 18% more frequently than their SMB counterparts.

In a cutthroat business world with immense competition, a data loss incident or downtime could cause irreparable damage to your organization. A comprehensive business continuity and disaster recovery (BCDR) strategy is critical to survive and thrive in today's ever-changing business environment.

[Download](#)

[Download](#)

Get the **Tech Trends & Insights 2022 Survey Report** to learn how businesses are adapting their approach to data backup and disaster recovery to support today's hybrid workforces.

In case you missed it, here's our **State of Cyberattacks infographic** to learn more about the current state of cyberattacks and data breaches.